



STRATOS S-1

Electro-Hydraulic Operating Table



This state-of-the-art surgical table **STRATOS S-1** features an advanced **microcomputer control system** and **electro-hydraulic transmission technology**, ensuring precise positioning, smooth operation, and enhanced safety. Designed with a unique structure and an aesthetically refined appearance, it offers ease of use, reliability, and meets **international quality standards**.

With **optimal X-ray fluoroscopy capabilities**, this table provides exceptional imaging clarity, making it ideal for **urology, thoracic surgery, renal procedures**, and other specialties that require seamless integration with **C-arms and X-ray machines**. Its innovative design enhances surgical efficiency and precision, making it a valuable asset in modern operating rooms.

Advantages:

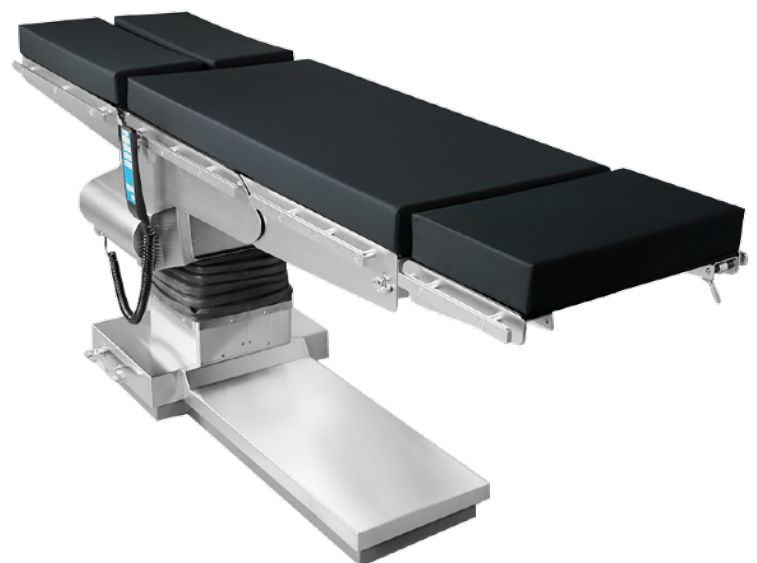
- **Advanced Control System** – Utilises **microcomputer control** and **electro-hydraulic transmission technology** instead of traditional electric push rod technology, ensuring more precise body positioning and smoother, more stable operation.
- **Backup Control System** – Features a **column emergency control panel** and two **independent control systems** to ensure continued operation even if one system fails.
- **Comfortable Memory Foam Mattress** – **80 mm thick mattress** with **40 mm memory foam** and **40 mm high-density foam**, effectively reducing pressure on the patient during long surgeries.
- **Versatile Tabletop Design** – The **head plate, leg plate, and small seat plate** can be disassembled and **repositioned** in different directions to accommodate various surgical postures.
- **Enhanced X-ray Imaging** – The **unique unilateral column design** combined with a **carbon fiber panels** provides superior **X-ray translucency** and a higher imaging perspective.
- **Durable and Hygienic Construction** – Made of **high-quality aluminum alloy**, with a **unilateral column design** that enhances aesthetics, impact resistance, and corrosion resistance while making the table easy to clean.
- **One-Key Horizontal Reset** – Allows the table to return to a horizontal position instantly from any angle, improving efficiency during procedures.
- **Power Storage Function** – Equipped with a **battery and power storage system**, ensuring continued operation in case of AC power failure. The system automatically switches to backup power and recharges when plugged into AC power source.



STRATOS S-1	Parameter	Remarks
Height (mm)	720 - 1020	without mattress
Tabletop length (mm)	2150	-
Tabletop width (mm)	540	including side rail 600
Longitudinal shift (mm)	N/A	-
Built-in kidney bridge (mm)	N/A	-
Trendelenburg & Reverse Trendelenburg (°)	26 / 26	electro-hydraulic
Left / Right Tilt (°)	20 / 20	electro-hydraulic
Back Plate / back rest (Up / Down) (°)	≥80 / ≥40	electro-hydraulic
Main (upper) Leg Plate adjustment (Up / Down) (°)	46 / 90	pneumatic, detachable
Leg Plate outreach adjustment (°)	≥90	manual
Head Plate adjustment (Up / Down) (°)	50 / 90	pneumatic, detachable
Load capacity	350 kg	-

Standard accessories

Mattress	1 set
Hand controller	1 piece
Waist support	2 pieces
Shoulder support	2 pieces
Arm plate	2 pieces
Goepel leg support	2 pieces
Anesthesia screen frame	1 piece
Radial Clamp	2 pieces
Side rail clamp	3 pieces



FABRYKA APARATURY ELEKTROMEDYCZNEJ
FAMED Łódź S.A.
 ul. Dostawcza 3D
 93-231 Łódź, POLAND



www.famed.pl

info@famed.pl



Jarosław **Majchrzak**
+48 784 012 501
 j.majchrzak@famed.pl

Manar **Saif**
+48 791 642 063
 m.saif@famed.pl

Emil **Orozco**
+48 605 592 786
 e.orozco@famed.pl

Florenca **Gonjo**
+48 728 390 885
 f.gonjo@famed.pl

